

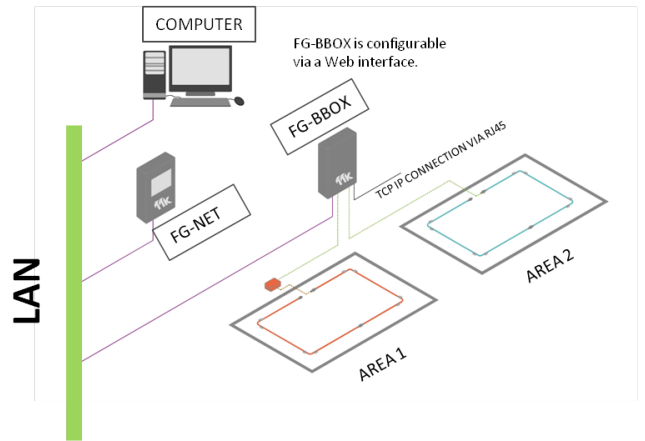


# FG-BBOX Web Interface



## Introduction

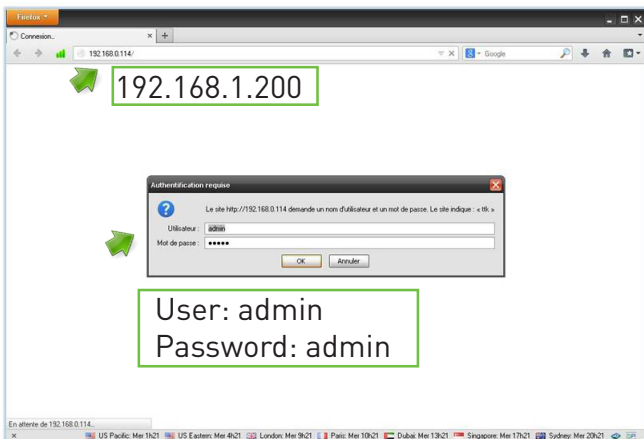
- The FG-BBOX is an external device of the FG-NET Digital Unit. It expands FG-NET to manage two additional circuits of sense cables. The FG-BBOX is monitored by FG-NET via a standard Ethernet network.
- FG-BBOX can be configured remotely on a computer (windows, Linux or Macintosh exploitation system).



Connection diagram of FG-NET, FG-BBOX and a PC in a Network

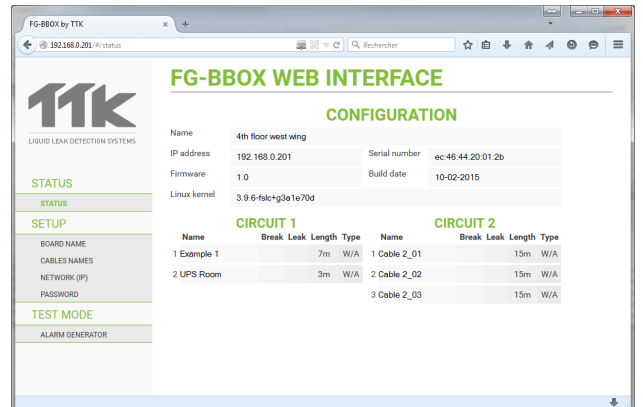
## 1 IP Setting of FG-BBOX

- Connect a computer to FG-BBOX through an existing network, or make a direct connection with a crossover cable and manual IP set on the computer using those settings:
  - **Computer IP: 192.168.1.100**
  - **Netmask: 255.255.255.0**
  - **Gateway: 192.168.1.1**
- Open a web browser (Firefox is recommended) and enter the FG-BBOX default IP in the address bar (**192.168.1.200**).  
FG-BBOX will prompt for login/password, enter "**admin**" and "**admin**". The FG-BBOX web interface will be displayed.



## 2 'STATUS' Menu

- FG-BBOX web interface consists of three main menus: Status, Setup and Test Mode.
- The menu "Status" gives a general view of the FG-BBOX's configuration and its real time status: alarms will be displayed on this interface. Data under this menu is generated automatically by the system.

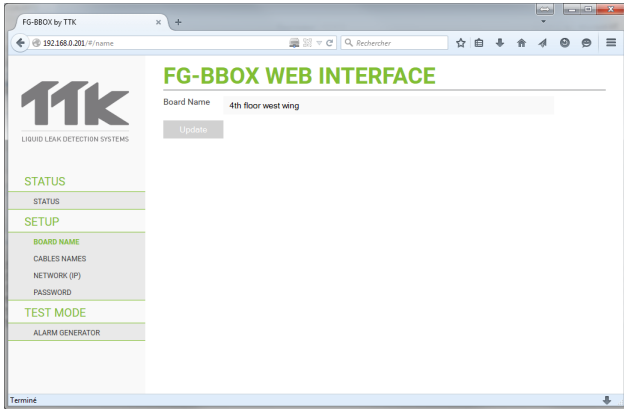


CONFIGURATION → FG-BBOX unit's system information.

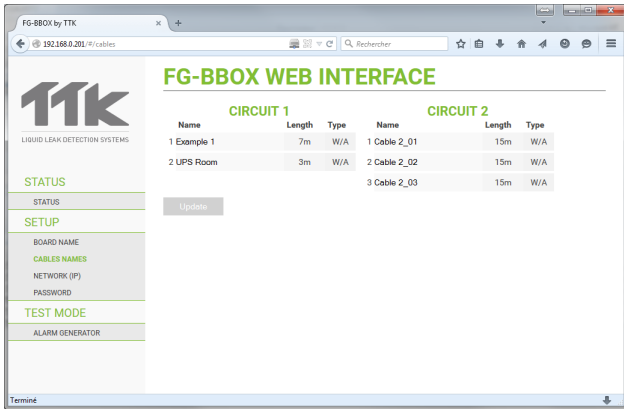
CIRCUIT 1, CIRCUIT 2 → Details of all connected cables on the two circuits of the FG-BBOX unit.

### 3 'SETUP' Menu

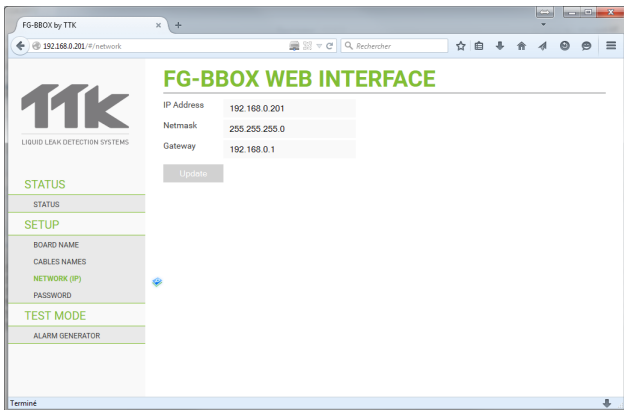
- Under "Setup" menu: "Board Name" is the name of the concerning FG-BBOX unit. It can be renamed by the user.



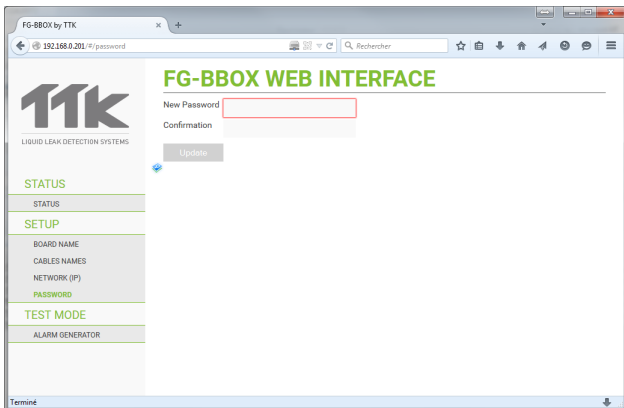
- "Setup" > "Cables Names": all connected cables will be detected automatically by FG-BBOX, their length and type will be displayed (Type: W/A: Water or Acid leak detection sense cable). Each sense cable can be renamed by the user.



- "Setup" > "Network": Network configuration interface, including IP address, Netmask and Gateway.

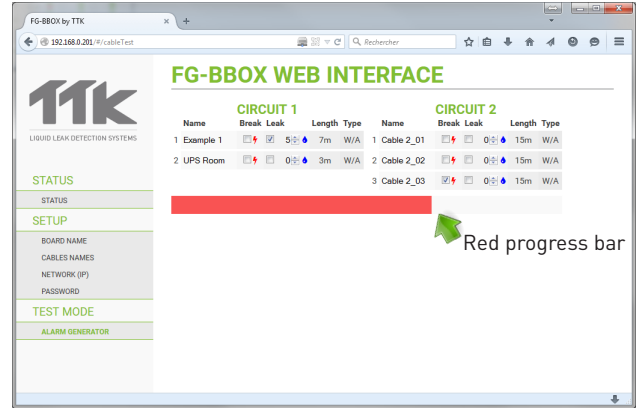


- "Setup" > "Password": the user can modify the default password. The same password will be needed on FG-NET unit in order to connect with the FG-BBOX, for 'paring' function.

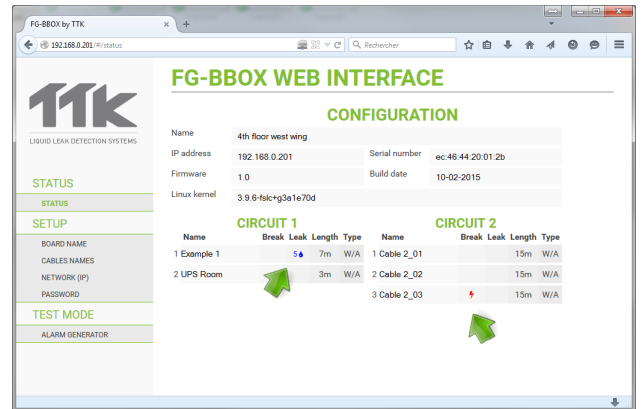


### 4 'TEST MODE' Menu

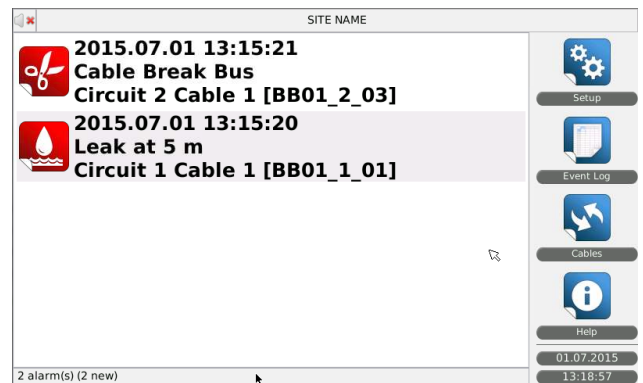
- "Test Mode" menu allows taking leak or cable break tests on the connected cables, without making the real simulation on the cables.
- The red progress bar is a 5 minutes temporization for the alarm simulation. After 5 minutes, all the alarms will be automatically reset.



- During the test, go back to "Status" menu to view the result.



- If FG-NET is connected in the same network, the two tests of leak and cable break will be displayed as real alarms on its screen. This indicates the FG-BBOX and FG-NET have been configured successfully.



This brochure has been carefully prepared to ensure technical accuracy but is only intended for promotional use. TTK cannot guarantee that the information contained herein contains no errors or omissions, and hence does not accept responsibility related to the use of its equipment. TTK maintain its obligations set forth in the Standard Terms and Conditions of Sale and will not, under any circumstances, assume liability for any incidental damages, indirect or consequential, arising from the sale, resale, use or misuse of this product. The purchaser(s) accept their responsibility as the sole judge(s) of the adaptability of the product for the intended use.  
 FG-NET, FG-SYS and TOPSurveillance are trademarks of TTK S.A.S. © TTK 2015